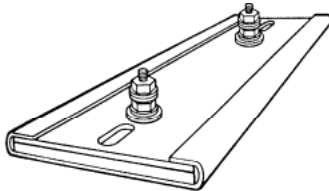


MICA STRIP HEATERS

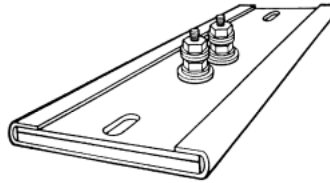
POST TERMINALS

Opposite ends, with holes,
1 1/2" cold section at each
end. MIN. WIDTH 1".



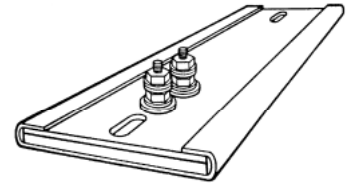
POST TERMINALS

Located in the middle -
tandem, centerline with
length of heater, with holes,
1 1/4" cold section at each
end. MIN. WIDTH 1"



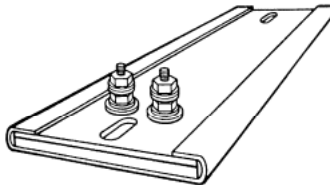
POST TERMINALS

Tandem at one end of heater,
centerline with length,
with holes. 1 1/2" cold section at
terminal end and 1" at
opposite end. MIN. WIDTH 1"



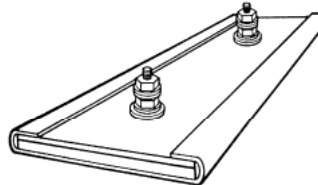
POST TERMINALS

Opposite ends with 3/4" cold
section each end. MIN.
WIDTH 1".



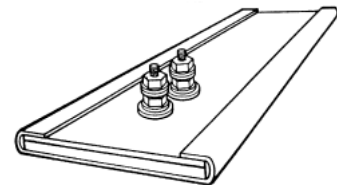
POST TERMINALS

Parallel same end, along
width of heater, with holes,
1 1/2" cold section at terminal
end and 1" at opposite end.
MIN. WIDTH 2 1/2".



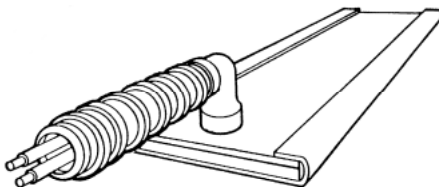
POST TERMINALS

Tandem at one end of heater,
center line with length of
heater with 3/4" cold section at
terminal end and 3/8" at
opposite end. MIN. WIDTH 1"



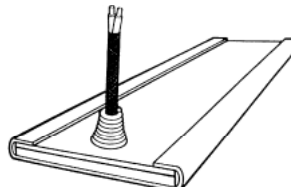
RIGHT ANGLE FLEXIBLE METAL HOSE

Specify stainless steel or
galvanized metal hose
covering fiberglass leads
exiting from one end of
heater surface. Can be
positioned in any direction
with 3/4" cold section at
terminal end and 3/8"
opposite end. MIN. LENGTH
5 1/2". MIN. WIDTH 1 1/2".



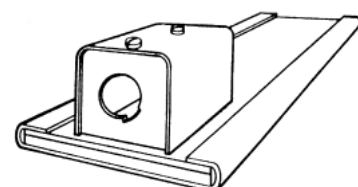
METAL OVERBRAID

Exiting from one end of
heater surface through a
strain relief with 10" overbraid
covering 12" fiberglass leads
with 3/4" cold section at
terminal end and 3/8"
opposite end. MIN. LENGTH
5 1/2". MIN. WIDTH 1 1/2"



TERMINAL BOX PROTECTION

Designed in standard height
of 1 3/4" high, with 5/8"
conduit knockout for standard
metal hose connections.
Protects terminals from
damage, spill leakage,
grounding for short
circuiting. MIN. LENGTH
without mounting holes 4 1/2",
with holes 6" MIN. WIDTH
1 1/2"



WEST HEAT INDUSTRIES LTD