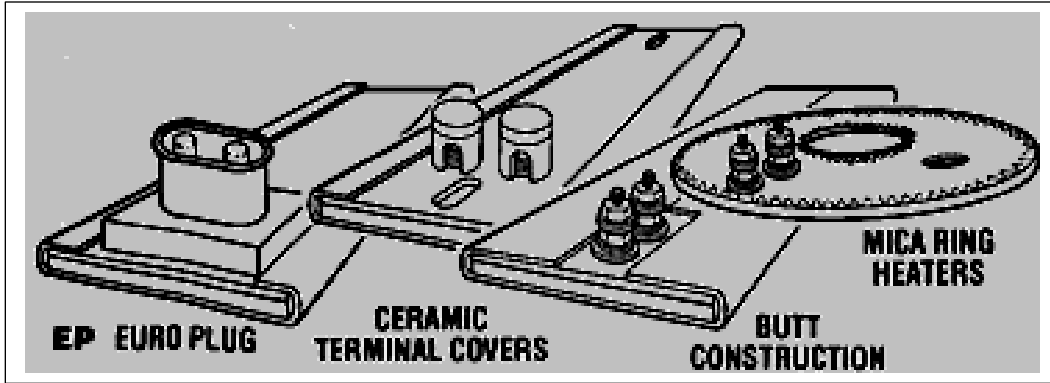
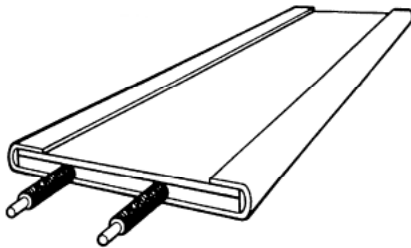


MICA STRIP HEATERS MADE TO ORDER VARIOUS SHAPES & DESIGNS

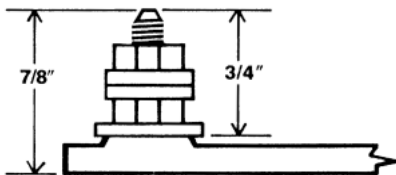


****Add Holes & Cutouts as you need them****

METAL OVERBRAID
Exiting same end, 10" overbraid covering 12" fiberglass leads with 3/4" cold section at terminal end and 3/8" opposite end.
MIN. WIDTH 1 1/2".



TERMINATIONS



MICA STRIP SPECIFICATIONS:

WATT DENSITY
Depends on size and operating temperature, up to 35 w/sq. in.
SHEATH MATERIAL
Standard electro-plated steel or stainless steel
INSULATION MATERIAL
Mica
RESISTANCE TOLERANCE
NEMA standard +10% -5%
WATTAGE TOLERANCE
NEMA standard +5% -10%
VOLTAGE DEVIATION
±5 on design voltage MAX. 600 VAC
MAXIMUM SHEATH TEMPERATURES
Standard steel 800°F, stainless steel 1200°F
LENGTH TOLERANCE
±1/8"
MINIMUM WIDTH
3/4"
WIDTH TOLERANCE
1/32"
THICKNESS NOMINAL
3/16"
MOUNTING AND SENSOR HOLES
Holes or slots may be specified in any location. Must have at least 1/2" between the edge of the hole and one side of the heater.
STANDARD POST TERMINALS
10/24
BUTTON TERMINALS
10/32 OR 6/32

****Add Terminal Boxes or Lead Wires wherever you need them to be****

WEST HEAT INDUSTRIES LTD

1680 Church Avenue
Winnipeg, Manitoba R2X 2W9
www.westheat.com

ELECTRICAL HEATING DIVISION

Phone: (204) 694-2129
Fax: (204) 694-2098
Fax Orders To: 1-800 358-7711