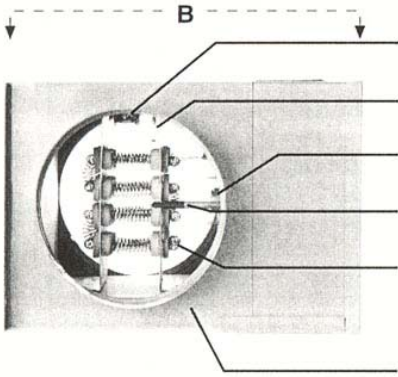


## FEATURES AND SPECIFICATIONS



**Automatic Reset Thermal Cut-out**

Safety feature preventing overheating; will reset automatically after cool-off.

**Air Flow Sensor**

Modulates the heating capacity according to the quantity of air flowing through the heater.

**Manual Reset Thermal Cut-out**

Additional safety feature which prevents the frame from overheating.

**Temperature Sensor**

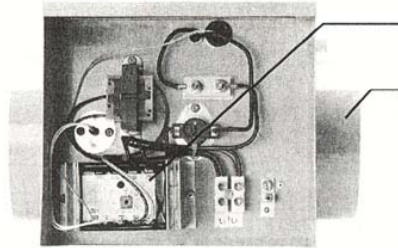
Controls the heater proportionally to maintain the pre-set air temperature in the duct.

**Open Coil Elements**

Made of the highest grade nickel-chrome resistance wire, they will not age or oxidize, thus assuring longer heater life.

**Enclosure**

Corrosion resistant galvanized steel.

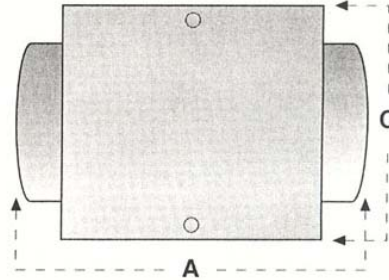


**Built-in Electronic Temperature Controller and Sensor**

Proportionally modulates the heating load to match the exact capacity required, thus minimizing operating cost.

**Round Collars**

Simplifies the installation and considerably reduces field labor.



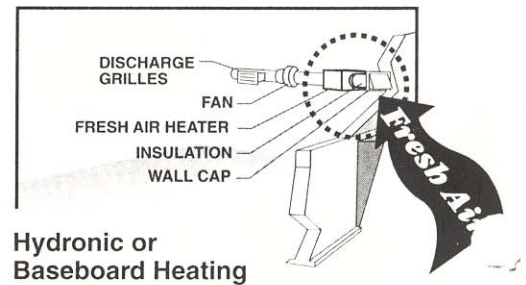
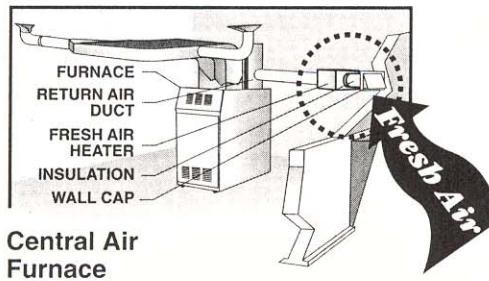
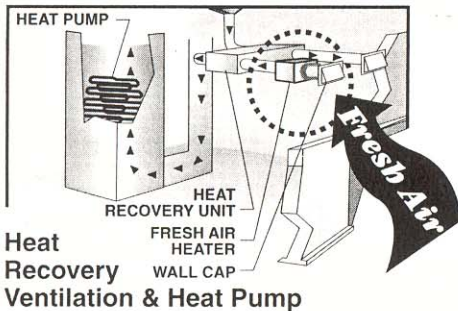
DIA	A	B	C
6"	12.50"	11.50"	8.50"
8"	12.50"	13.75"	10.25"

Model	Collar size	KW	Voltage	Amps	Min CFM	Model	Collar size	KW	Voltage	Amps	Min CFM
TER-6-1120	6	1	120/1	8.3	10	TER-8-3240	8	3	240/1	12.5	30
TER-6-1240	6	1	240/1	4.2	10	TER-8-4240	8	4	240/1	16.7	40
TER-6-2120	6	2	120/1	16.7	20	TER-8-5240	8	5	240/1	20.8	40
TER-6-2240	6	2	240/1	8.3	20	TER-8-6240	8	6	240/1	25.0	40

Specifications are for standard units.

For other sizes, voltages and capacities, please contact your Thermolec representative.

A booklet containing application notes, a detailed product list and technical informations, is available.



# WEST HEAT INDUSTRIES LTD

1680 Church Avenue  
Winnipeg, Manitoba R2X 2W9  
[www.westheat.com](http://www.westheat.com)

ELECTRIC HEATING DIVISION

Phone: (204) 694-2129  
Fax: (204) 694-2098  
Fax Orders To: 1-800 358-7711