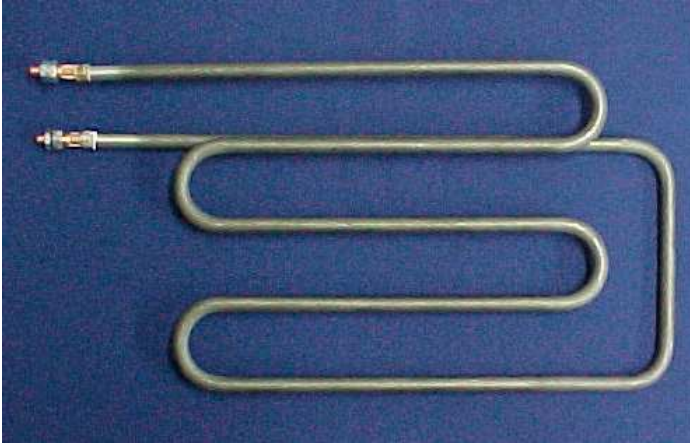


TUBULAR ELEMENTS

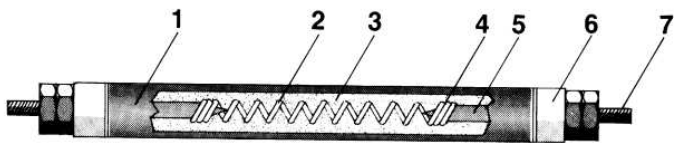


FEATURES:

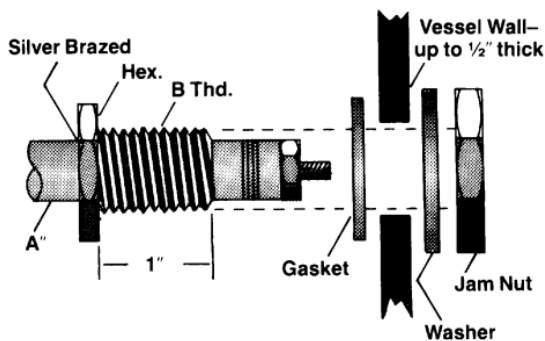
- The heater is swaged reducing the diameter of the metal sheath and compacting the insulation. This insures rapid heat transfer and holds the coil in position for forming.
- Many formations are available
- Long, trouble free service

CONSTRUCTION:

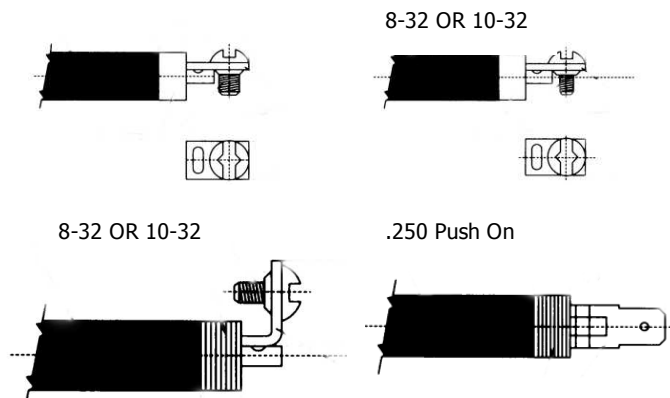
- 1 Steel, Stainless steel, copper, or incoloy sheathed element.
- 2 Element wire situated in proximity to outside surface for maximum heat transfer and minimum internal temperature while preserving good dielectric qualities.
- 3 Pure magnesium oxide compressed to an optimum density for best heat transfer and electrical insulation at elevated temperatures.
- 4 Weld connection.
- 5 Cold pin.
- 6 Insulator.
- 7 Standard post terminal.



MOUNTING FITTINGS:



TERMINALS



WEST HEAT INDUSTRIES LTD

1680 Church Avenue
Winnipeg, Manitoba R2X 2W9
www.westheat.com

ELECTRICAL HEATING DIVISION

Phone: (204) 694-2129
Fax: (204) 694-2098
Fax Orders To: 1-800 358-7711